

## Is there a bank around here?

There is always a bank around if you're using TravelWallet. Preload your card with US dollars, euros, pounds sterling or Australian dollars before you go. That way you'll avoid spending more than you budgeted for and any exchange rate fluctuations. It can be used as both a payment and an ATM card. So make Standard Bank your first stop for TravelWallet.

Inspired. Motivated. Involved.



Standard Bank

Registered credit provider (NCRCP15) Authorised financial services provider  
The Standard Bank of South Africa Limited (Reg. No. 1962/000738/06), SISA 907508-06/07

Your approved Thompsons agent is:



**JOHANNESBURG:** Travel House, 6 Hood Ave, Rosebank, South Africa.  
P.O. Box 41032, Craighall, 2024, South Africa. Docex 270, Randburg.  
Tel: (27) (11) 770-7511; Fax: (27) (11) 770-7670/1/2.

**DURBAN:** 20 The Boulevard, West End Office Park, Spine Road, Westville, South Africa. P.O. Box 2758, Westway Office Park, 3635, Durban, South Africa. Docex 238, Durban. Tel: (27) (31) 275-3500; Fax: (27) (31) 275-3990.

**CAPE TOWN:** 15th Floor, Main Tower, Standard Bank Centre, Hertzog Boulevard, Foreshore, South Africa. P.O. Box 382, Cape Town, 8000, South Africa. Docex 145, Cape Town. Tel: (27) (21) 408-9500; Fax: (27) (21) 408-9596.

Thompsons Holidays: A division of Cullinan Holdings LTD (Reg No 1902/001808/06)

[www.thompsons.co.za](http://www.thompsons.co.za)

Just a phone call away from a remarkable holiday.



# Thompsons Holidays

## AUSTRALIA & NEW ZEALAND 2008/2009



Thompsons  
Holidays

Dream the destination... Live the journey.

Thompsons  
Holidays

Why you should insist on a Thompsons Holiday

Cute Koala Bear



Thompsons Holidays

### The Leading Travel Companies of The World

Thompsons Holidays is a proud member of "The Leading Travel Companies of The World", a collection of quality International travel and tourism companies offering an extensive selection of holiday options across the globe. All members of this group offer superior quality, value for money and the highest levels of service.

### Getting to know Thompsons Holidays

This Thompsons brochure has been designed especially for you, our valued client. We have gone the extra mile to ensure that all your travel needs are covered and are confident that after reading it, you'll insist on a Thompsons holiday. The Thompsons website is a one-stop shop for a variety of exciting holidays. Simply visit [www.thompsons.co.za](http://www.thompsons.co.za) and discover a wealth of travel opportunities.

### Your Link to Thompsons

Thompsons Holidays has dealings with more than 1500 travel agencies across South Africa so you'll have no difficulty booking the holiday you deserve. Just pop into a travel agency near you and request a Thompsons holiday.

### Price Guarantee

Once full payment is received from you, the price paid is guaranteed, irrespective of any subsequent changes in airfare or fluctuations in the exchange rate.

### Awards Speak Volumes

With 30 years experience in the travel industry, we have built a reputation for providing excellent service, specialist knowledge and value for money tailor-made packages. Our efforts have not gone unnoticed and for five consecutive years, Thompsons has been voted Best International Tour Operator and Best African Tour Operator in the Diners Club ASATA Travel Awards.

### Thompsons Value for Money

As one of the largest Tour Operators selling Australia and New Zealand, Thompsons Holidays enjoys excellent rates and booking conditions with our partner airlines, hotels, transfers, excursion and attraction suppliers. This translates into the best possible value for you, our valued customer.

### Travel Pack

Prior to departure, your travel documents will be presented to you in a durable Thompsons travel wallet. Each pack contains valuable information, as well as re-usable luggage labels and other surprises, depending on your destination. In the event of an emergency, a Thompsons staff member is contactable by phone, 24 hours a day, 365 days a year.

### Thompsons Top-Up's

Stretch your Rands and Top-Up your Thompsons package with additional excursions to enhance your holiday experience. Pre-book car hire, sightseeing tours, admission tickets and more.

Refer to our website [www.thompsons.co.za](http://www.thompsons.co.za) for more information.

- What is LAGS? You may only carry liquids, aerosols and gels (LAGs) in your hand luggage in containers that have a maximum capacity of 100ml each, all packed in one re-sealable, transparent plastic bag, capacity of the bag must not exceed one litre.



Thompsons  
travel tips

Thompsons  
Holidays





# No Worries, Mate!

1	Australia
2-3	Sydney & Melbourne
4	Perth
5	Brisbane & The Gold Coast
6	Cairns & Port Douglas
7	Whitsundays
8	Great Barrier Reef Cruises
9	Ayers Rock
10-11	Car & Campervan Hire
12	AAT Kings
13	Australian Rail
14	P&O Cruising
15	Princess Cruise
16	Auckland
17	Christchurch & Wellington



**HOTEL GRADING**

Please note that the hotel gradings listed in this brochure are the gradings supplied to us by our operators in Australia and New Zealand or the hotels themselves. It is possible that they could differ from hotel star ratings of hotels in South Africa.

## Australia



**CAPITAL CITY:** Canberra  
**LANGUAGE:** English is the official language  
**CURRENCY:** Australian Dollar (AUD)  
**VISA:** SA Passport holders require a Visa  
**AREA:** 7,693,300 km<sup>2</sup>  
**TIME DIFFERENCE:** There are 3 time zones:  
Eastern Standard Time: (New South Wales, Tasmania & Queensland).  
Central Standard Time: (South Australia and Northern Territories).  
Western Standard Time (Western Australia).  
Sydney: SA time + 9 hours (East)  
Perth: SA time + 7 hours (West)  
**HEALTH REQUIREMENTS:**  
No vaccinations are presently required.

WHAT THINGS COST	
These prices are an average price and may vary according to areas, hotels and season. (Australian Dollars)	
Bottle of Beer	AU\$ 3.50
Cinema Ticket	AU\$ 15.00
Cup of Coffee	AU\$ 3.00
Can of Coke	AU\$ 1.50
Hamburger	AU\$ 4.25



**In the Outback**

Australia, or “Oz” as it is more affectionately known, is fast becoming one of the most popular holiday destinations in the world. Even though it is literally “a thousand miles from anywhere”, thanks to the advent of air travel, people from all around the globe are being drawn to this vast country with its amazing selection of natural resources and attractions.

Enormous distances mean that visitors with limited time should be selective and rather concentrate on one region at a time. The most populated areas of Australia are on the East Coast and in the South. The term “outback” often means anything west of Queensland and New South Wales although officially it is the very interior of the country.

Golden beaches, snow clad mountains, vast and sandy deserts, blue lakes, clear seas, beautiful barrier reefs, tropical rainforests, great cities and centuries old Aboriginal culture all combine to offer something for everyone.

**THE BEST TIME TO TRAVEL**  
The extreme north of the country is tropical, while the south is largely temperate. Spring is from September to November, summer is enjoyed from December through February. March to May sees the arrival of autumn and June to August is winter.



# Sydney, New South Wales



## SIGHTSEEING

The most populated state, and where many travellers begin their holidays, New South Wales (NSW) is home to Sydney, the Snowy Mountains, and south end of the Great Dividing Range as well as a range of developed and undeveloped regions along the coast.

### See Sydney & Beyond Smartcard:

The perfect way to pack a lot into a short space of time - the See Sydney & Beyond Smartcard covers entry to over 40 attractions within the city and the Blue Mountain region. You can also take the option of including use of citywide public transport into the cost of your card.

2 days: AU\$180 pp (incl transport)

3 days: AU\$232 pp (incl transport)

7 days: AU\$309 pp (incl transport)

### Sydney City Sights & Bondi Tour

(Half Day): Pass through the historical Rocks area and Circular Quay as you learn about the history and significance of the area. View the Opera House and Harbour Bridge from Mrs Macquarie's Chair, a chair specially designed for the governor's wife to look out at the harbour. Travel through Chinatown, Darling Harbour, Kings Cross and Double Bay. Stop at "The Gap", the harbour heads, for a photo opportunity and enjoy Morning Tea (at your own expense) at world famous Bondi Beach.

from AU\$60 pp

### Captain Cook Harbour Cruise

(1.25 hours) See all the harbours best known landmarks. Depart regularly throughout the day up to 18h00. All cruises are fully narrated and stop at Darling Harbour for a visit to Sydney Aquarium.

from AU\$57 pp

### Hunter Valley Wine Tasting Tour

(Full Day): Travel to New South Wales' premier wine grown region. Enjoy morning tea at the historical town of Wollombi. Experience a private tasting at world famous Lindemans and increase your knowledge of wine with an 'Introduction to Wine' appreciation course. Enjoy tasting platters offering you a range of individual dishes for lunch, while a Cellar master shows you how each dish 'marries' with certain wines.

from AU\$153 pp

### The Bridge Climb

A most sought after Sydney attraction taking you along the upper span of the arch on catwalks and ladders all the way to the summit, 134 metres above Sydney Harbour 360 degree views of Sydney. No other Sydney tourist attraction can give you this feeling of standing at the top of the world, with the Harbour spread before you.

from AU\$197 pp



Sydney Opera House



★★★

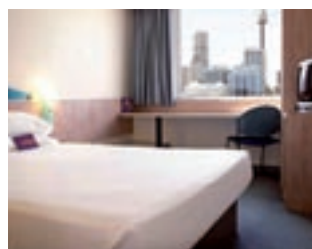
### Sullivans

LOCATION: On Oxford Street surrounded by shops, boutiques, restaurants, cinemas and art galleries & only a 5 minute walk to Aussie Stadium, SCG & Fox Studios and Bondi Beach nearby.

ACCOMMODATION: 66 rooms with air-conditioning, laptop connection, TV, in-house movie, direct dial phone and hairdryer.

FACILITIES: Pool, gym, laundry facilities, free guest bicycles and free internet access, restaurant serving breakfasts.

from AU\$74 pp



★★★

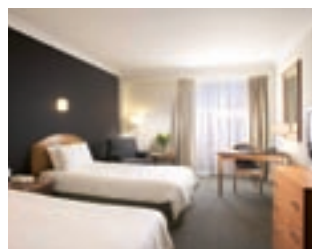
### Ibis Darling Harbour

LOCATION: In Darling Harbour, a 10 minute walk to Star City Casino and Convention Centre and a short walk to Sydney's CBD.

ACCOMMODATION: 256 rooms with air-conditioning, TV, in-house movie, radio, direct dial phone, hairdryer, automatic wake-up call.

FACILITIES: Baby sitting, laundry facilities and disabled facilities.

from AU\$89 - 215 pp



★★★★

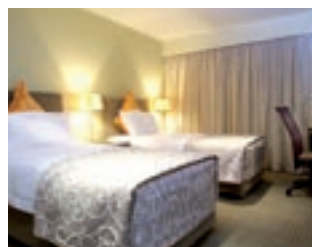
### Holiday Inn Darling Harbour

LOCATION: Darling Harbour, opposite Sydney Entertainment Centre, behind China Town. Easy access by public transport, Lightrail and Monorail stations are nearby.

ACCOMMODATION: 237 air-conditioned rooms, television, In-house movies, radio, direct dial phone, mini bar, and hairdryers.

FACILITIES: Medium size lobby, restaurant, bar & grill, gym, sauna, baby sitting, laundry facilities, disabled facilities.

from AU\$100 - 358 pp



★★★★

### Four Points By Sheraton

LOCATION: Overlooking the water with direct access to Sydney Aquarium a short bus ride from Sydney Opera House and the Rocks.

ACCOMMODATION: 589 rooms with Internet via TV, connection for laptop, air-conditioning, satellite TV, in-house movie, direct dial phone, mini bar, hairdryer, automatic wake-up call.

FACILITIES: Restaurants & pubs, 24 hour portage and room service, gym and shop.

from AU\$124 - 344 pp



★★★★

### Medina Grand Sydney

LOCATION: Central, close to Chinatown and Martin Place. 10 minutes walk to Circular Quay & the Rocks.

ACCOMMODATION: 144 studio rooms with air-conditioning, broadband access, fully equipped kitchen, laundry, direct dial STD/IDD, fax/modem/data lines available, in-house movies, in room safe.

FACILITIES: Swimming pool, sauna, gym, restaurant, dry cleaning and laundry services, babysitting, mini bar.

from AU\$106 - 175 pp

# Melbourne, Victoria



## SIGHTSEEING

Melbourne, the capital of the state of Victoria, is set around the shores of Victoria's Port Phillip Bay and boasts a lively and cosmopolitan pulse, with chic boutiques for great shopping, cafes, beautiful gardens, festivals and exciting sporting events.

### See Melbourne & Beyond Card

This card offers convenience & great value for money with admission included for over 50 attractions across Melbourne & its surrounding areas. Included in the card is a 2-day Metcard that allows unlimited travel on public transport in Melbourne's inner suburbs and entry into a range of galleries, museums & historic sites.

2 Day from AU\$108 pp

3 Day from AU\$139 pp

7 Day from AU\$217 pp

### Great Ocean Road Adventure

Travel the length of the Great Ocean Road passing towering limestone cliffs, sweeping white beaches and stunning forest scenery. Truly one of the world's great scenic coastal drives. Witness a fabulous spectacle of massive natural erosion. Contrasts abound between rugged coast and verdant rainforest living side by side. See the amazing Twelve Apostles - limestone stacks rising dramatically from the Southern Ocean and visit the Information Centre.

from AU\$132 pp

### Morning Melbourne City Sights

The city of Melbourne is a wonderful blend of heritage architecture, modern skyscrapers and contemporary designs. Vibrant cafes and cosmopolitan restaurants, colourful parklands and beautiful waterways are all found throughout this charming city. Discover its appeal for yourself and explore the cosmopolitan city with wide boulevards and fine historic buildings.

from AU\$64 pp

### Phillip Island Penguin Parade & Wildlife

Get close to the remarkable penguins and wildlife of Australia Phillip Island, including Australia's largest fur seal colony, the little penguins and cuddly koalas.

from AU\$120 pp

### Yarra Valley Wineries and Puffing Billy with Lunch

Journey into the heart of the Yarra Valley. Tantalise your taste buds at Rockfords Eyton where you may sample and buy a selection of quality local wines, including Cabernet, Chardonnay, Semillon and Pinot. Enjoy a winemaking tour of the highly regarded Domaine Chandon, maker of one of Australia's best sparkling wines, sip a glass of wine and enjoy local cheeses on the patio whilst enjoying the stunning view.

from AU\$149 pp



Melbourne has a wonderful blend of Architecture



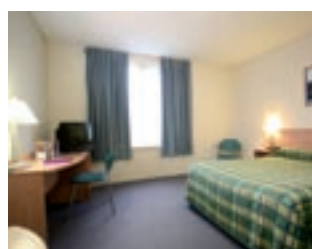
★★★

### Batman's Hill On Collins

LOCATION: A block from the river in the western end of Melbourne's Business District.

ACCOMMODATION: 132 small rooms with shower only, fridge, tea/coffee maker, connection for laptop, air-conditioning, TV, in-house movie, direct dial phone, hairdryer and automatic wake up call.

FACILITIES: Large lobby, 5 floors, 24 hour room service, baby sitting, laundry facilities and disabled facilities. **from AU\$93 - 200 pp**



★★★

### Ibis Melbourne

LOCATION: Near Victoria market a ten minute walk from the city centre and Melbourne Zoo.

ACCOMMODATION: 160 Rooms with fridge, connection for laptop, air conditioning, television, in-house movie, radio, direct dial phone, hairdryer and automatic wake up call.

FACILITIES: Medium sized lobby, 3 lifts, 11 floor, baby sitting, laundry facilities and disabled facilities. **from AU\$68 - 91 pp**



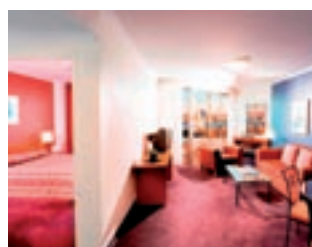
★★★★

### Novotel Melbourne On Collins

LOCATION: Located in the heart of Melbourne on Collins Street.

ACCOMMODATION: 285 large rooms with connection for laptop, air conditioning, television, satellite television, in-house movie, radio, direct dial phone, mini bar, hairdryer, trouser press.

FACILITIES: Medium sized lobby, 5 lifts, 24 hour portage and room service, heated indoor pool, gym, sauna, shop, baby sitting, laundry facilities, business centre and disabled facilities. **from AU\$116 - 216 pp**



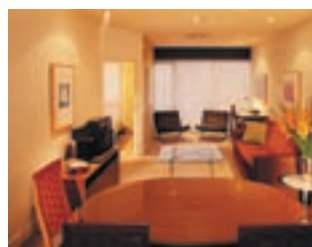
★★★★

### Mantra on the Park

LOCATION: In the city centre near Chinatown, opposite Carlton Garden and near to Parliament House.

ACCOMMODATION: 144 self contained apartments with fully equipped kitchen, washing machine & dryer, lounge and living area as well as connection for laptop, air-conditioning, TV, in-house movie.

FACILITIES: Room service from 07:00 to 22:00, indoor pool, sauna, baby sitting, laundry facilities and disabled facilities. **from AU\$117-176 pp**



★★★★★

### Medina Grand Melbourne

LOCATION: In Melbourne's CBD, 2 blocks from Bourke Street Mall.

ACCOMMODATION: 155 fully air-conditioned Studio apartments with kitchenettes, TV, in-house movies, direct dial STD/ IDD, broadband access, phone/ fax/ modem/ data lines available, safe deposit box.

FACILITIES: Porterage, room service, pool, gym, sauna, baby sitting, laundry facilities and disabled facilities. **from AU\$96 - 144 pp**



# Perth, Western Australia



## SIGHTSEEING

Enjoy the sunshine, beaches and natural parklands of Perth, capital of Western Australia. With fantastic weather, clean and uncrowded beaches and situated on the banks of the Swan River this beautiful city really is the place to see and be seen.



### Morning Perth & Fremantle

The tour takes in all key attractions and historical points of interest, beginning with Kings Park botanical gardens, where you will have the time to experience a walk through the tree canopies on the Tree Top Walkway. Later, continue to Cottesloe Beach before arriving at historical Fremantle. Enjoy a walk down the main street past cafes and through market stalls. Return to Perth past Perth's exclusive suburbs, the University of Western Australia, Royal Perth Yacht Club, the Old Swan Brewery, Barrack Street Jetty, the Bell Tower and Perth Mint.

*from AU\$91 pp*

### Pinnacles Adventure, Koalas and Dunes including Lunch

Cross over the Swan River to the Swan Valley, visit Caversham Wildlife Park to view and photograph koalas and kangaroos close up before the thrilling experience of 4-wheel driving over massive Lancelin sand dunes and the chance to try sand boarding..

*from AU\$182 pp*

### Dolphin Explorer with Mandurah Canals

Discover the magnificent coastline south of Perth with its famous beaches and sparkling Indian Ocean. Mandurah - gateway to the Southwest with its spectacular canal style homes. The waterways are also home to pods of loveable Bottlenose Dolphins..

*from AU\$144 pp*

### Wave Rock, York, Wildflowers & Aboriginal Cave Paintings including Lunch

Drive through the scenic Darling Ranges and stop at the famous Dog Cemetery, a tribute to Australian working sheep dogs, before reaching Hyden, home of Wave Rock. After a picnic lunch head off to view some other intriguing rock formations before you reach Mulka's Cave with ancient Aboriginal cave paintings.

*from AU\$195 pp*



Uncrowded Beaches and Wonderful Weather



★★★

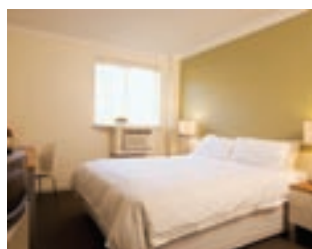
### Ibis Perth

LOCATION: Western end of city centre close to Murray and Hay Street Malls.

ACCOMMODATION: Medium size rooms with connection for laptop, air conditioning, television, in-house movie, radio, direct dial telephone, hairdryer and trouser press.

FACILITIES: Medium sized lobby, 2 lifts, laundry facilities, restaurant and bar.

*from AU\$76 - 134 pp*



★★★

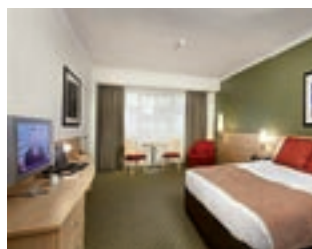
### Sullivans

LOCATION: Within walking distance of the City Centre and the Perth Convention Centre.

ACCOMMODATION: 68 rooms with en-suite bathrooms, air-conditioning, TV, tea/coffee making facilities, direct dial telephone, free in-house movies, hairdryer, radio.

FACILITIES: Pool, restaurant, bar, baby sitting, laundry facilities and disabled facilities.

*from AU\$70 pp*



★★★★

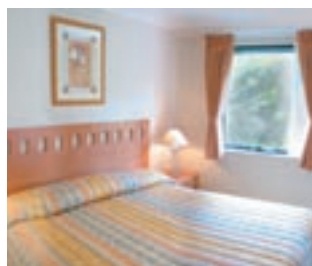
### Mercure

LOCATION: Near major shopping, entertainment and nightlife areas.

ACCOMMODATION: 233 rooms with air-conditioning, mini bar, TV, WIFI access, connection for laptop, in-house movie, radio, direct dial telephone, hairdryer and automatic wakeup call.

FACILITIES: 24 hour portage and room service, heated outdoor pool, gym, sauna, shop, baby sitting, laundry facilities, business centre and disabled facilities.

*from AU\$88 - 207 pp*



★★★★

### Mount Bay Waters

LOCATION: Adjacent to Perth's two greatest tourist attractions, the Swan River and Kings Park and a few minutes walk to the CBD.

ACCOMMODATION: Fully equipped kitchen and laundry amenities as well as connection for laptop, air-conditioning, TV, in-house movie, radio, direct dial phone, hairdryer and trouser press.

FACILITIES: 2 outdoor pools, gym, tennis, shop, baby sitting, laundry facilities and disabled facilities. A free Perth city CAT Bus stops outside the hotel.

*from AU\$93 pp*



★★★★

### Medina Grand Perth

LOCATION: In CBD, at Perth's Convention Exhibition Centre.

ACCOMMODATION: 138 one and two bedroom apartments. Fully equipped kitchens, laptop connection, air-conditioning, TV, in-house movie, radio, direct dial phone, mini bar, hairdryer and trouser press.

FACILITIES: Porterage and room service, heated outdoor pool, gym, sauna, baby sitting and disabled facilities.

*from AU\$93 pp*

# Brisbane, Queensland

## SIGHTSEEING

Downtown Brisbane is a unique combination of the old and new - where sandstone cathedrals blend seamlessly with steel and glass skyscrapers, modern architectural design is teamed with a healthy respect for tradition. Spend lazy afternoons ordering creamy cappuccinos and dozing by the river or with over 650 stores trading seven days a week if you can't find what you're shopping for in downtown Brisbane, it simply doesn't exist.

### Full Day Sunshine Coast & Noosa

This tour showcases the diversity and beauty of the Sunshine Coast. Visit Noosa Heads and Hastings Street before following the coast to Mooloolaba. Mooloolaba has its own attractions and atmosphere with numerous sidewalk cafes, bars and of course Underwater World.

from AU\$98 pp

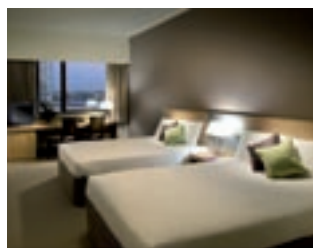
### Full Day Croc Express & Zoo Entry

Tour by coach through the CBD past prominent buildings. You will tour past many historical and significant architectural buildings, including City Hall, Parliament House, St Johns Cathedral, Treasury Casino and much more.

from AU\$108 pp



Steel & Glass Skyscrapers in Brisbane



### ★★★ Ibis Brisbane

LOCATION: On the banks of the Brisbane River within easy walking distance to Brisbane's CBD.

ACCOMMODATION: 218 rooms with air conditioning, television, in-house movie, radio, direct dial phone and hairdryer.

FACILITIES: Simple medium sized lobby, restaurant, 3 lifts, laundry & disabled facilities.

from AU\$72 - 190 pp



### ★★★★ Novotel

LOCATION: On the edge of the CBD a few minutes walk to the main shopping area, Central Station and the Treasury Casino.

ACCOMMODATION: 291 rooms with internet via television, connection for laptop, air-conditioning, TV, in-house movie, radio, direct dial phone, mini bar, hairdryer, automatic wake-up call.

FACILITIES: Gym, sauna, baby sitting, laundry facilities, business centre and disabled facilities.

from AU\$81 - 220 pp

# Gold Coast & Surfers Paradise, Queensland

## SIGHTSEEING

Grab your towel and hit the beach! Learn how to surf or watch the pros make it look so easy. Surfers Paradise is the jewel of Queensland's Gold Coast and is one of the most popular holiday destinations in Australia. With beautiful beaches, golf courses, theme parks, an array of shopping options, family attractions and nighttime beachfront markets and wonderful restaurants all in easy access, you're never short of finding things to do.

### Dreamworld Admission Fee

Enjoy the day at Dreamworld. The minute you enter the park, it is like entering another world where something new and exciting happens at every minute and at every turn. Now incorporating 11 'worlds' Central Plaza & Main Street, Rocky Hollow, Gum Tree Gully, Blue Lagoon, Gold Rush Country, Koala Country, Ocean Parade, Tiger Island, Australian Wildlife Experience and Nick Central, they all feature a host of exciting attractions to keep you entertained all day.

from AU\$123 pp



Learn to Surf!



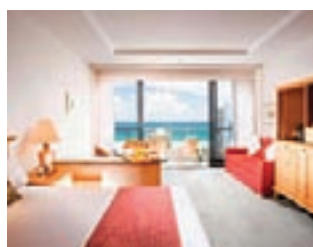
### ★★★ Paradise Resort

LOCATION: Set in 5 acres of lush, tropical gardens in the heart of Surfers Paradise, 300 metres from the surf beach.

ACCOMMODATION: 405 rooms with balcony, air-conditioning, bath with overhead shower, cable TV and hair dryer.

FACILITIES: Restaurant, café, bar, Kids Zone playground, tennis courts, games room, four swimming pools, shop, boutique, car rental facilities, laundry facilities and disabled facilities.

from AU\$66 - 89 pp



### ★★★★ Crowne Plaza

LOCATION: 250 metres from Gold Coast Beach.

ACCOMMODATION: 378 rooms with balconies, internet via television, laptop connection, air-conditioning, TV, in-house movie, radio, direct dial phone, mini bar, hairdryer, trouser press.

FACILITIES: Revolving restaurant, café & bar, 2 swimming pools, spa, gym, sauna, tennis, entertainment centre, chapel, 24 hour portage & room service and disabled facilities.

from AU\$86 - 169 pp



# Cairns, Queensland

## SIGHTSEEING

Cairns, the heart of Tropical North Queensland is Australia's primary gateway to the Great Barrier Reef. This vibrant, eclectic city is framed by the spectacular twin backdrops of rainforest mountain ranges and the sparkling Coral Sea. The World Heritage listed Wet Tropics Rainforest, Great Barrier Reef and the Outback are within easy reach. It is an adventure-lovers paradise with numerous tours and adrenalin activities on offer, from white water rafting to bungee jumping and skydiving - and with hundreds of tours visiting the Great Barrier Reef each year, you're sure to find at least one to try.

### Outer Barrier Reef with Quicksilver

For your experience of a lifetime, Quicksilver's wave piercing catamarans and friendly crew will take you to a reef at the very edge of Australia's Continental Shelf, to an underwater world that is a dazzling kaleidoscope of colour and brilliance. Choose to dive, snorkel, or stay dry and explore the stunning reef from the comfort of a Quicksilver semi-sub, just one metre underwater. Watch the fish feeding from Quicksilver's unique underwater viewing platform or fly in a helicopter over the reef.

from AU\$218 pp



Kuranda Tropical Rainforest



★★★

### Colonial Club Resort

LOCATION: Set in lush tropical gardens 4km from the city centre.  
ACCOMMODATION: 345 rooms with connection for laptop, air-conditioning, TV, in-house movie, radio, direct dial phone, hairdryer, tea / coffee making facilities and refrigerator.

FACILITIES: 24 hour portage and room service, 3 outdoor pools, gym, tennis, shop, beauty parlour, baby sitting, laundry facilities, disabled facilities and business centre.

from AU\$68 pp



★★★★

### Holiday Inn

LOCATION: Close to the centre of Cairns, overlooking Trinity Bay.  
ACCOMMODATION: 237 rooms with internet via television, laptop connection, air-conditioning, TV, in-house movie, radio, direct dial phone, mini bar, hairdryer, trouser press, automatic wake-up call.

FACILITIES: Large lobby, 7 floors, 3 lifts, 24 hour portage and room service, pool, shop, boutique, baby sitting, Laundry facilities, disabled facilities.

from AU\$100 - 254 pp

# Port Douglas, Queensland

## SIGHTSEEING

Located just north of Cairns, Port Douglas is a popular base from which to explore the Great Barrier Reef and the rainforests of the Wet Tropics, Daintree and Cape Tribulation. Enjoy one of numerous tours that embark from Port Douglas, many combining the adventure experiences of the Reef and the Wet Tropics. Accommodation options in Port Douglas offer a unique insight into the splendour of nature. Enjoy a massage to the sounds of the rainforest or the waves crashing on the beach...in Port Douglas it's all possible.

### Kuranda Heritage Experience

Glide over the rainforest canopy and enjoy a walk through the rainforest, surrounded by a diversity of plants and birdlife. At Kuranda "Village in the Rainforest" spend your time wandering through the many shops and markets. Experience Kuranda Scenic Railway, this famous historic rail journey winds its way along the Kuranda Range through 15 tunnels and over 40 bridges, clinging to the rock face where one can almost touch the tumbling waterfalls.

from AU\$209 pp



A hop, skip & jump away from the Great Barrier Reef



★★★★

### Mantra Treetops Resort & Spa

LOCATION: 10-minute drive from Port Douglas, close to the beach.  
ACCOMMODATION: 303 Rooms with connection for laptop, air conditioning, television, satellite television, in-house movie, radio, direct dial phone, mini bar, hairdryer, automatic wake-up call.

FACILITIES: Large lobby, 2 restaurants, spa, 2 lifts, 24 hour portage and room service, pool, gym, sauna, shop, boutique, beauty salon, baby sitting, laundry facilities and disabled facilities.

from AU\$111 - 162 pp



Four Mile Beach, Port Douglas

# Whitsundays & Great Barrier Reef



## Idyllic Island Experiences...

In the heart of Queensland's Great Barrier Reef, lie the Whitsunday's, 74 islands floating like jewels in the tropical warm waters of the Coral Sea. Discovering the Great Barrier Reef is one of life's must-dos and it's easily accessible from Queensland'



Divers Paradise

### Hamilton Island



#### Very popular...

Set amidst pristine surroundings, Hamilton Island, one of the most popular Whitsunday Islands, offers a multitude of activities to participate in and every taste and budget is accounted for. Hamilton Island is easily accessible with direct flights from Sydney (two hours), Melbourne (three hours), Brisbane and Cairns (one hour).

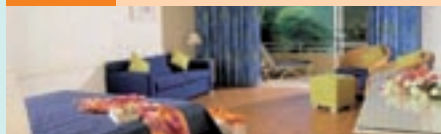
#### ★★★★ Hamilton Reef View



LOCATION: Across the road from the beach.  
ACCOMMODATION: Rooms have balconies, air-conditioning, TV, in-house movie, radio, direct dial phone, mini bar, hairdryer, trouser press, automatic wake-up call.

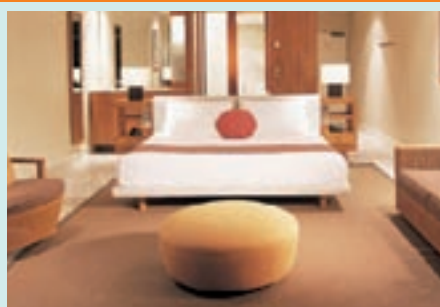
FACILITIES: 24 hour porterage, room service, 2 pools, gym, tennis, shop, boutique, beauty parlour, baby sitting, laundry facilities and disabled facilities. *from AU\$168 - 210 pp*

#### ★★★★★ Hamilton Island Palm Terrace



LOCATION: Just behind the beach.  
ACCOMMODATION: 60 terraced rooms with air-conditioning, TV, radio, direct dial phone, mini bar, hairdryer and trouser press.  
FACILITIES: A very pleasant property for the more budget minded, but shares facilities with Reef and Bungalows. *from AU\$146 - 178 pp*

### Hayman Island



#### The most desirable island resort in Australia

Hayman Island, located in the beautiful Whitsunday's just off the Queensland coast is the epitome of tropical paradise. On a sparkling sunny day the colour of the water of Haman's lagoon and Whitsunday Passage are simply stunning - the hues range from turquoise to emerald and sapphire. There are air connections from all major cities in Australia to Hamilton Island daily. The Haymans launch or seaplane transfer meets all in coming Hamilton Island commercial flights.

#### ★★★★★ Hayman Resort



The Island's only resort, set amongst trees and magnificent gardens. Sandstone walkways weave through the lush gardens, shady ponds and crystal waters spill into tropical palm fringed beaches.

ACCOMMODATION: 211 rooms each with a view, whether it is lush tropical gardens, beach or poolside, all with internet via television, connection for laptop, air conditioning, TV, satellite television, in-house movie, radio, direct dial phone, mini bar and hairdryer.

FACILITIES: Fitness centre, windsurfing, squash courts, billiards, table tennis, snorkelling, paddle skis, walks, Jacuzzi, card and games, hobby cat sailing, tennis, 9-hole putting green, cinema and more. *from AU\$254 - 339 pp*

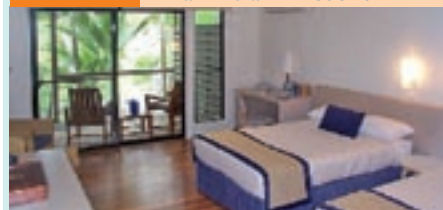
### Lizard Island



#### The perfect diving spot

A ruggedly beautiful island on the northern Great Barrier Reef in Tropical North Queensland, Lizard Island boasts 24 pristine beaches ranging from white sand to rocky escarpments. Lizard Island is renowned for its scuba diving and snorkelling and is surrounded by coral reefs, ribbon and lagoon reefs. It is Lizard Island's close proximity to Cod Hole that distinguishes it from many other reef islands. Regular flights are available from all Australian capital cities to Lizard Island daily via Cairns.

#### ★★★★★ Lizard Island Resort



Lizard Island is one of a kind. A beautiful island, with only 80 guests at one time - with much to do, or just laze around in the sun. The resort is on the Great Barrier Reef 240km North of Cairns.

ACCOMMODATION: 38 room of medium size with views Anchor Bay and the beach.  
FACILITIES: Many complimentary sports & walks. Scuba diving, snorkelling, Great Barrier Reef trips at an additional charge. Children 12 years and under are not catered for on Lizard Island.

*from AU\$707 - 832 pp*



# Great Barrier Reef Cruises

Explore all the hidden jewels of the Great Barrier Reef. Three and four night small ship cruises allow you to swim, snorkel and SCUBA dive amid the fish and corals in the clear tropical waters. Or you can join our marine biologist aboard the glass bottom boat, stroll golden sandy beaches on remote coral cays or visit secluded tropical islands and ancient rainforests, while our on-board experts interpret the natural wonders of the reef, rainforest and island habitats. We'll show you the reef most visitors never see – and you can choose to be as adventurous or as relaxed as you please.



Beach



Great Barrier Reef



Glass Bottom Boats



Cruising the Reef

## Inclusions

Every cruise includes on-board accommodation, all meals, morning and afternoon teas, tea and coffee available at all times, use of snorkelling equipment, masks, fins, flotation vests and wetsuits, guided glass-bottom boat coral viewing and snorkelling excursions, presentation by Marine Biologists, access to islands, marine and national parks, use of comprehensive range of library and video resources, an introductory SCUBA experience for first time divers. Prices exclude pre and post cruise transfers, shore excursions and entrance fees in Cooktown, bar and ship purchases, ship to shore telephone and facsimile calls, costs associated with SCUBA diving and Government EMC (approx \$15 pp).

## Ship Facilities – Coral Princess & Coral Princess II

Air-conditioned dining room with modern décor; two comfortable air-conditioned lounges, comprehensive resource library featuring videos, DVDs and books on the reef and islands of Tropical North Queensland, large sundeck and spa, comprehensive dive shop, a range of souvenirs and personal items available for purchase, telephone and facsimile.

## Accommodation

Accommodation for up to 44 passengers (Coral Princess II) or 50 passengers (Coral Princess) in twin/double staterooms & cabins. **Deluxe Staterooms** (1-2 pax) are spacious and are situated on the top deck, **Upper Deck**

**Staterooms** (1-2 pax) located on the upper decks, **Staterooms** (1-3 pax) are located on the main dining deck. Some staterooms have an extra divan or Pullman Berth suitable for a third person/child, and compact **Cabins** (1-2 pax) on the main and lower decks (twin/bunk). All levels of accommodation are air-conditioned with private bathroom ensembles, international power outlets, hair dryers, shampoo, conditioner & towels serviced daily.

## Dining

Dining featuring fresh local produce and seafood is central to cruising the Great Barrier Reef. Breakfast, lunch and dinner are all buffet style. Special diets can be catered for however we require a minimum of two weeks notice.



Relaxing onboard a cruise

## Departure & Boarding

- Townsville cruises depart Townsville Breakwater Terminal, Sir Leslie Thiess Drive
- Cairns cruises depart Trinity Wharf, Cairns
- Boarding is 30 minutes prior to departure

**4 Nights:** Spectacular Lizard Island, an historic coastal outpost and deserted coral cays join rich rainforest and a stunning ribbon reef as the unforgettable experiences of this cruise.

### Cairns - Lizard Island - Cairns (CCC4)

- Depart Cairns Tuesday & Friday 5.00pm – (weekly except alternate Tuesdays 18Mar–14Oct, alternative Fridays 28Mar–10Oct)
- Disembark Cairns 8.00am Saturday & Tuesday

**3 Nights:** Experience tropical islands where the rainforest canopy towers overhead, visit reefs where multitudes of coloured fish decorate rich coral gardens and cruise where dolphin play and dugongs glide in the unique Hinchinbrook Channel.

### Cairns – Dunk Island - Townsville (CCT3)

- Depart Cairns Saturday 11.00am (weekly except alternate weeks 22Mar – 04Oct)
- Disembark Townsville Tuesday 10.00am Townsville – Dunk Island - Cairns (CTC3)
- Depart Townsville Tuesday 1.00pm (weekly except alternate weeks 25Mar – 07Oct)
- Disembark Cairns Friday 1.30pm

**Captain Cook Cruises™**

**7-Nights:** The 3 & 4 night cruises combined for the ultimate Great Barrier Reef experience.

### Cairns – Lizard Island – Cairns – Dunk Island - Townsville (CCT7)

- Depart Cairns Tuesday 5.00pm (weekly except alternate weeks 18Mar – 14Oct).
  - Disembark Townsville Tuesday 10.00am Townsville – Dunk Island - Cairns – Lizard Island - Cairns (CTC7)
  - Depart Townsville Tuesday 1.00pm (weekly except alternate weeks 25Mar – 07Oct).
  - Disembark Cairns 8.00am Tuesday
- Due to weather, tides or mechanical reasons the itinerary may be subject to change without notice.

*Due to weather, tides or mechanical reasons the itinerary may be subject to change without notice.*



# Ayers Rock, Northern Territory



## SIGHTSEEING

### Awesome Ayers Rock

#### - a natural wonder of the world!

One of the most famous symbols of Australia, Uluru/Ayers Rock is a place of great cultural significance. 440km by road to the west of Alice Springs in the Uluru-Kata Tjuta National Park you will find Uluru/Ayers Rock and the 36 impressive domes of Kata Tjuta/The Olgas. These massive geological formations, which date back over 500 million years, are one of the most popular tourist attractions of Australia and are visited by thousands of people each year.

### Uluru Sunrise and Base Tour

Travel to the Mutitjulu Walk where you will be escorted to the beautiful Mutitjulu Waterhole by your AAT Kings Driver/ Guide. View Aboriginal rock paintings and learn about the Aboriginal and European history of Uluru. Travel around the base of Uluru in the comfort of the coach as your Driver/Guide provides commentary about the numerous sacred areas and features to be found at Uluru. Visit the Uluru – Kata Tjuta Cultural Centre, where you can learn about Aboriginal culture and Tjukurpa (Aboriginal law). There is also the opportunity to purchase Aboriginal arts and crafts. Travel to the Uluru sunset viewing area. Enjoy nibbles and a complimentary glass of wine as the sun sinks over the western horizon and the evening sky brings out the many shades of colour that Uluru is famous for. Occasionally, when it rains, you may be lucky enough to see the spectacular sight of water cascading over the sides of Uluru. Return to Ayers Rock Resort.

from AU\$90 pp

### Uluru Sunrise, Valley Of The Winds Morning Tour

Witness the early morning light as you travel to Kata Tjuta and your Driver/Guide explains the geological history of the giant domes. At Kata Tjuta your Driver/Guide will escort you on a 2-3 hour walk between the valleys of conglomerate rock. The walking path is rocky and requires a good level of fitness. In the cool morning air marvel at the unique flora and fauna that has survived in this harsh environment. Once at the Valley of the Winds lookout, take some time to gaze out over the central valley of Kata Tjuta.

from AU\$104 pp

### Half Day Aboriginal Culture, Desert Park and Museum

A unique opportunity to meet, talk and learn from our traditional land owners, visit Alice Springs Desert Park Museum of Central Australia plus more...

from AU\$96 pp



Sacred "Uluru" or Ayers Rock



★★★★

### Desert Garden

LOCATION: Within the Ayers Rock Resort with all the facilities of the resort accessible via a regular Shuttle Bus.

ACCOMMODATION: 160 large rooms, bathroom with shower, connection for laptop, air-conditioning, TV, in-house movie, direct dial phone, mini bar, hairdryer and trouser press.

FACILITIES: Pool, tennis, golf, shop, boutique, beauty parlour, baby sitting, laundry facilities and disabled facilities. Room service 24 hours.

from AU\$154 - 226 pp

## Choice Hotels Australasia™

### Choice Hotels Australasia

Choice Hotels Australasia has more than 330 hotels, inns, suites, resorts and apartments in Asia Pacific to choose from. Choice Hotels Australasia provides a range of accommodation from economical to first class.

Choice Hotels Australasia represents the internationally recognised brands Comfort (Everywhere you need us), Quality (The name you can trust) and Clarion (First Class, Full-Service).

### The Choice HotelPass

The Choice HotelPass offers a brilliantly simple solution if you are planning to do a self-drive itinerary. The HotelPass consists of one or more prepaid accommodation vouchers allowing you to retain complete freedom by staying where you like, when you like!



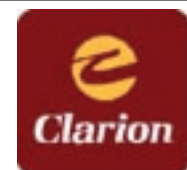
#### Comfort.

Everywhere you need us. Comfort is the name people think of for value and reliability when travelling. There are now 1,500 Comfort Inns, Hotels, Suites and Resorts worldwide, with a network of more than 180 in Australia, New Zealand and the Asia Pacific region. Comfort Inn properties provide competitive rates, with most having restaurants, swimming pools and meeting rooms. You can be assured of a warm welcome and personal hospitality.



#### Quality.

The name you can trust. Quality Inns, Hotels, Suites and Resorts have been trusted around the world for more than 60 years, offering a memorable experience of full-service and superior facilities. You can rely on Quality offering licensed restaurants, professional business services and recreational facilities. Quality properties are exceptional value for the discerning business and leisure traveller and are ideally situated in capital cities, major regional centres and resort locations.



#### Clarion.

First Class, Full-Service. Clarion Hotels, Suites and Resorts - the ideal selection for those looking for first class accommodation where attention to detail is paramount. A stylish collection of hotels, offering exceptional service and facilities for business and leisure travellers. Experience the difference that keeps guests returning worldwide with over 150 locations in 15 countries.



# Car Hire



Self-drive through Australia



IDAR – Subaru from AU\$79 per day (based on a 7 day rental)

Australia & New Zealand are perfect destinations for a self drive holiday - for total freedom and comfort combine car hire with The Choice Hotelpass, or perhaps you would prefer the "Spirit of Independence" with a Maui Motorhome. For prices and sample self drive itineraries contact Thompsons Holidays.....

**Europcar** is a reliable and affordable car rental company with locations throughout Australia. No matter what your needs are, Europcar's large car fleet has a model to suit your requirements. For business travel or holiday travel, Europcar's great passenger cars include economy, intermediate and full sized classes, plus people movers / minivans for those travelling with a group. For a touring holiday or something special, select from 4WD / SUVs and sports car hire through to prestige / luxury cars.

## Distance & Driving Time Chart

The Distance chart below includes our main locations throughout Australia.  
Please note that distances are measured in kilometres and driving times measured in hours and minutes.

	Adelaide	Alice Springs	Brisbane	Broome	Cairns	Canberra	Darwin	Melbourne	Perth	Sydney
Adelaide		1693 km 20.3 hrs	2127 km 25.5 hrs	4277 km 52.2 hr	2845 km 34.1 hr	1212 km 14.5 hr	3225 km 38.7 hr	755 km 9.1 hrs	2713 km 32.6 hr	1422 km 17.1 hr
Alice Springs	1693 km 20.3 hr		3064 km 36.8 hr	2748 km 31.2 hr	2435 km 29.2 hr	2905 km 34.9 hr	1532 km 18.4 hr	2488 km 29.9 hr	3722 km 44.7 hr	2960 km 35.5 hr
Brisbane	2127 km 25.5 hr	3064 km 36.8 hr		4680 km 58.3 hr	1826 km 21.9 hr	1331 km 16 hr	3502 km 42 hr	1675 km 20.1 hr	4427 km 53.1 hr	1027 km 12.3 hr
Broome	4277 km 52.2 hr	2748 km 32.2 hr	4680 km 58.3 hr		4007 km 50.6 hr	5218 km 65 hr	1863 km 23 hr	5010 km 62.3 hr	2232 km 27.5 hr	5226 km 65 hr
Cairns	3418 km 34.1 hr	2435 km 29.2 hr	1826 km 21.9 hr	4007 km 50.5 hr		3157 km 37.9 hr	2953 km 35.4 hr	3501 km 42 hr	4727 km 56.7 hr	2853 km 34.2 hr
Canberra	1212 km 14.5 hr	2905 km 34.9 hr	1331 km 16 hr	5218 km 65 hr	3157 km 37.9 hr		4233 km 50.8 hr	651 km 7.8 hr	3925 km 47.1 hr	290 km 3.5 hr
Darwin	3225 km 38.7 hr	1532 km 18.4 hr	3502 km 42 hr	1863 km 23.1 hr	2953 km 35.4 hr	4233 km 50.8 hr		3980 km 47.8 hr	4283 km 51.4 hr	4095 km 49.1 hr
Melbourne	755 km 9.1 hr	2488 km 29.9 hr	1675 km 20.1 hr	5010 km 62.3 hr	3501 km 42 hr	651 km 7.8 hr	3980 km 47.8 hr		3468 km 41.6 hr	893 km 10.7 hr
Perth	2713 km 32.6 hr	3722 km 44.7 hr	4427 km 53.1 hr	2232 km 27.5 hr	4727 km 56.7 hr	3925 km 47.1 hr	4283 km 51.4 hr	3468 km 41.6 hr		4136 km 49.6 hr
Sydney	1422 km 17.1 hr	2960 km 35.5 hr	1027 km 12.3 hr	5226 km 65.1 hr	2853 km 34.2 hr	290 km 3.5 hr	4095 km 49.1 hr	893 km 10.7 hr	4136 km 49.6 hr	



LDAR – Ford Falco from AU\$128 per day (based on a 7 day rental)



IVAR – Toyota Hi-Ace from AU\$121 per day (based on a 7 day rental)



LXAR – Audi A6 from AU\$148 per day (based on a 7 day rental)

All price for car hire are based on a 7 day rental



# Campervans

## ALL MOTORHOME RENTALS INCLUDE:

### General Equipment

- Pegs
- Dustpan & brush
- Broom
- Bucket & hose
- Fire extinguisher
- Toilet chemicals
- Matches
- Ice cube tray
- Coat hangers
- Floor Safe in Spirit 2T/S, 4 & 6 Motorhomes

### Personal Kit

A Personal Kit is supplied for each customer travelling.

- Towel
- Pillow & pillow case
- Doona / duvet, sheet

## INCLUDED IN THE RENTAL RATE:

- Unlimited kilometers
- Vehicle insurance (excess applies)
- 10% GST
- 2.5% stamp duty and administration fee
- Extra driver fees
- Starter Pack which includes:
  - Dish washing Liquid
  - Bin liner
  - Disposable gloves
  - Mosquito coils
  - Toilet rolls
  - Sponge
  - Soaps
  - Tissues
  - Shampoo sachets
  - Conditioner sachets
- Taxi fare from airport to Maui branch on pick up will be reimbursed.
- 10% discount on powered sites at all BIG4 Holiday Parks [www.big4.com.au](http://www.big4.com.au)

- Travel Wallet which includes travel guide, road maps, safe driving information.
- 24 hour customer care road service helpline.
- Super Saver Discount Book on leading attractions.

### Kitchen Kit

- Tea-towel
- Plates & bowls
- Cups & glasses
- Knives, forks, spoons
- Bottle & can opener
- Mixing bowls & colander
- Saucepans
- Frying pan
- Cooking utensils
- Chopping board
- Kettle, teapot
- Coffee plunger
- Toaster

**Can I drive a Motorhome on my standard licence?** Yes you can. A non-provisional and non-probationary resident country driver's licence is to be presented at time of rental. If your licence is not in an English format a valid International Drivers licence is also required.

**Do you have any vehicles with automatic transmission?** The Spirit 2, Spirit 2 T/S and Spirit 4 are manual transmission. All Spirit 6 motorhomes are automatic.

**Are there age restrictions for driving a Maui?** Drivers must be 21 years of age or over. If you are over the age of 75 years, a medical certificate is required at time of vehicle collection stating you are medically fit to operate a motor vehicle.

**How is the hire charged?** Motorhome hires are charged for every calendar day of the hire.

**Spirit 4 – (4 berth) from AU\$223 per day (based on a 7 day rental)**

**Is there a minimum rental duration?** The minimum rental is **5 days** for the Spirit 2, Spirit 2T/S, Spirit 4WD and **7 days** for the Spirit 4 and Spirit 6. A 7 day minimum also applies to all one-way rentals and all hires between 15 December 2008 and 5 January 2009. Minimum rental periods are subject to change during peak periods.

**Is there an additional charge for more than one driver?** No, this is included in your hire.

**Where can I camp in a Maui Motorhome?** Australia has an extensive network of holiday parks in all major tourist centres and in most towns. We recommend **BIG4 Holiday Parks** where all Maui motorhome rental customers receive a 10% discount off BIG4 site fees. They offer excellent recreational facilities, as well as resources to dispose of your waste water. They also have provision for you to plug the vehicle into electricity.

Spirit 4

**BOOKING CODE: 4BM**  
**SLEEPS: 4 ADULTS**

**FEATURES:**

- Shower
- Toilet
- Gas Stove
- Fridge
- Microwave
- Air-Conditioning / Heating
- Pressurised Hot & Cold Water
- Internal Access
- Turbo Diesel
- Automatic or Manual Transmission
- Power Steering

**Kitchen Equipment**

- Linen & Bedding
- General Equipment
- 2 Double Beds
- Radio / Cassette or CD player

**Important note:**  
Baby seats (3 years and under) and booster seats (minimum 4 years of age) can be fitted on the rear seats in the dinette area, facing forward. A booster seat can also be strapped in the front passenger seat with the diagonal seatbelt by law.

**DAY LAYOUT**

**NIGHT LAYOUT**

## The Greatest Journey... Australia with Maui





Sydney Skyline



Cute Koala



A great holiday lasts a lifetime! An AAT Kings holiday is the ultimate hassle-free way to holiday. With everything arranged in advance you don't have to worry about getting lost, finding attractions, reading maps or speeding tickets.

On an AAT Kings tour, there is a perfect balance of planned sightseeing and free time for independent exploration or just relaxing and doing nothing at all.

AAT Kings offer a wide range of escorted tours, short breaks, Camping Adventures and Day Tour programs throughout Australia and New Zealand.

**Premium Escorted Tours:** Escorted holidays with passengers accommodated at superior, first class properties comprise AAT Kings flagship products and range in length from shorter duration tours starting at three days up to comprehensive tours of 31 days.

**Low Cost Escorted Tours:** AAT Kings offer a range of Low Cost escorted accommodated holidays in New Zealand, Queensland and Tasmania, ideal for travellers who want the advantages of quality escorted touring at an affordable price.

**Camping Adventures:** AAT Kings camping adventures unlock a world of discovery as travellers come in close contact with Australia's natural beauty. Camping under the stars is always a revitalizing experience, and an experience made all the when you wake every morning to a fully cooked breakfast prepared by the tour's dedicated safari cook. Everything is provided from your tent to a mattress, plus a camping essentials kit containing sleeping bag, torch and dining set for you to keep.

**Short Breaks:** AAT Kings caters for independent holiday-makers, offering a unique range of short breaks in New South Wales and South Australia to complement personal itineraries and provide some exceptionally memorable experiences. There is also a very wide range of AAT Kings short breaks that focus on the Northern Territory.

**Sightseeing Day Tours:** AAT Kings has extensive day tour programs in Sydney, Melbourne, Alice Springs, Ayers Rock and Darwin. These tours are extremely popular with intercity and overseas tourists.

**Small Groups Adventures:** The Small Group Adventures program offers intrepid travellers a way to experience the vast, landscapes of Australia and New Zealand. AAT Kings' Small Group Adventures are designed for the young or young at heart who want to actively explore the best of the great outdoors off the beaten track while still enjoying the benefits of an escorted holiday.





# Rail Australia



## INDIAN PACIFIC

The Indian Pacific gives you two oceans on one of the world's longest train journeys coast to coast across this vast continent. The transcontinental journey from Sydney (Kalgoorlie) to Perth (Indian Ocean) departs twice weekly and offers scheduled stops at Broken Hill, Adelaide and gold rich Kalgoorlie. Aboard this great train journey you'll spend 1 night between Sydney & Adelaide, 2 nights between Adelaide & Perth, or 3 nights coast to coast.

**Route:** Sydney to Perth, via Adelaide

**Journey Duration:** 3 nights in either direction

**Distance:** 2901 Miles (4352 Km)

**Weekly Frequency:** Twice in both directions



## THE GHAN

The Legendary Ghan is the ultimate rail journey into the heart of Australia from Adelaide to Alice Springs and Darwin and return. Enjoy 1 or 2 nights aboard this great train and marvel at the spectacular Australian landscapes; from the rusty reds of the Red Centre and a town called Alice, to Katherine and the tropical splendor of Darwin in the north, to the countryside and rolling hills of Adelaide.

**Route:** Adelaide to Darwin, via Alice Springs

**Journey Duration:** 2 nights in either direction

**Distance:** 1986 Miles (2979 Km)

**Weekly Frequency:** Once from Adelaide to Darwin; Twice from Adelaide to Alice Springs.



## THE OVERLAND

The Overland offers return service between Adelaide, the gateway to many of Australia's best wine producing regions including McLaren Vale, the Barossa & Clare Valleys and Melbourne, home to many international sporting events, outstanding shopping and entertainment.

**Route:** Adelaide to Melbourne

**Journey Duration:** Daylight Service in both direction

**Distance:** 552 Miles (828 Km)

**Weekly Frequency:** Thrice in both directions

**Distance:** 2901 Miles (4352 Km)

**Weekly Frequency:** Twice in both directions



## TILT TRAIN

The Tilt Train is fast becoming the most popular way to explore Queensland's coastal destinations. Reach fantastic getaways like whale watching at Hervey Bay, spectacular Fraser Island, the Great Barrier Reef and stunning Whitsundays.

**Route:** Brisbane to Cairns/Brisbane to Rockhampton

**Journey Duration:** 1 night (25 hours)/9 hours

**Distance:** 1681 Km/638 Km

**Weekly Frequency:** Three times weekly and daily



## SUNLANDER

Comfort, flexibility and a great social atmosphere have made 'The Sunlander' one of Australia's great journeys and a firm favourite with travellers between Brisbane and the Tropical North. With its two styles of travel, 'The Sunlander' caters for all travellers, from the very discerning to the budget conscious.

**Route:** Brisbane to Cairns

**Journey Duration:** 1 night (32 hours)

**Distance:** 1681 Km

**Weekly Frequency:** Three times weekly



## SPIRIT OF THE OUTBACK

A realistic, up-front view of Queensland's captivating outback. On its journey west, the 'Spirit of the Outback' ventures through the heritage towns of Blackwater, Emerald and Barcaldine before arriving in Longreach, home to the famous Australian Stockman's Hall of Fame, Qantas Founders Museum and the Outback Heritage Centre.

**Route:** Brisbane to Longreach

**Journey Duration:** 1 night (24 hours)

**Distance:** 1325 Km

**Weekly Frequency:** Two times weekly





Cruising through crystal waters

**Whatever you are looking for from a cruise holiday experience, you will find just what you seek in the P&O Cruises range.**

The variety of cruise ships, fabulous destinations and itineraries means there is something spectacular for everybody's taste.

#### Where P&O Sail?

Sailing from Sydney, Brisbane or Auckland P&O Cruises offers many enticing cruises to the idyllic South Pacific, explorer cruises to exotic Asia and local cruises to Tropical North Queensland or round New Zealand.

#### The Ships

P&O Cruises Australia has been taking Australians on cruise holidays since 1932, when its 22,500-ton liner Strathaird sailed from Sydney on a five-night roundtrip cruise to Norfolk Island and Brisbane.

P&O Cruises now carries more than 100,000 passengers annually on scores of voyages to destinations throughout the South Pacific. P&O Cruises offers 2 ships sailing from Australia/New Zealand:

#### Pacific Dawn

Pacific Dawn is Australia's first superliner and currently sails from Sydney offering the unique "Your Choice Cruising". "Your Choice Cruising" means more choice in cabins, with Australia's most affordable balcony cabins. It means more choice in dining selections with five evening dining venues and more entertainment options.

#### Pacific Sun

P&O Cruises has been offering fantastic value packed holidays for more than 75 years and Pacific Sun continues this tradition in 2008-2009. "Classic Cruising" offers your favourite cruise ships and a fantastic

combination of spacious cabins, à la carte dining, dazzling entertainment and a host of spectacular South Pacific and Queensland destinations. These ships offer a wide range of cruises from Brisbane and Auckland of 7-21 night duration.

#### Will I Enjoy it?

Choose a P&O Cruises holiday and the options are endless. Cast aside any worries about what you will do all day on a cruise ship. After all, what other holiday could offer a diverse collection of islands, sights and cultures in one trip?

Your days on board can be as much as a highlight as your days ashore. From the moment you wake up aboard a P&O Cruises ship, you'll be spoilt for choice with things to do. There are just so many activities to choose from: perhaps a pre-breakfast visit to the fitness centre followed by a morning swim, a table-tennis game, duty-free shopping or an arts and craft class.

You can check out the changing view from the sunbathing deck, then after a delicious lunch in one of the ship's many dining venues or buffet you might sign up for a dance lesson, learn how to play traditional shuffleboard, visit the library and email friends, test your general knowledge at a trivia quiz, visit the spa for a relaxing massage or even join a game of bingo!

And, of course kids are catered for with all day activities available in one of three children's centres. After dinner, the night's fun begins with an exciting array of entertainment including musical performances, comedy shows, cabaret, DJs, live bands and dancing.







## Set sail between Sydney & Auckland

Join Princess for a 12-day adventure to the land **Down Under**. See glorious fjords, charming towns and modern cities as you sail between Sydney and Auckland.



**Welcome to Princess.** A relaxed, comfortable world where days unfold slowly in a procession of refined pleasures – fine meals and new friends, exhilarating activities and unexpected moments, and singular, gracious attention from a crew whose only goal is providing an unforgettable experience. Let us be your host and take you there – and deliver an unparalleled escape.



**More Space, More Possibilities.** While Princess ships may be grand in every respect, the experience onboard is more personal. We call it Big Ship Choice, Small Ship Feel®. It's the ability to offer the wide breadth of activities of a large ship, while retaining a warm, intimate ambience more associated with smaller vessels.

**Dining, You're Style.** It's how it should always be – especially when you're on vacation. With Princess, choose Traditional Dining or more flexible Anytime Dining. Whatever fits your style. Be sure to make reservations for superb specialty restaurants like Sabatini's. And don't miss our exclusive Ultimate Balcony Dining for a truly incredible treat.

### An Affordable Balcony, All Your Own.

A balcony affords you an arresting view of the stunning landscapes and ocean vistas on your voyage. And a surprisingly accessible luxury it is! Only Princess offers such a high percentage of balcony staterooms – at such affordable rates.

**At Your Service.** Let yourself be treated to warm smiles, genuine hospitality and an unwavering attention to your needs. Our C.R.U.I.S.E. ® credo says it all – Courtesy, Respect, Unfailing In Service Excellence. It's what you'll find on every cruise with Princess.



**Destinations.** Come aboard and set sail on any of over 90 unique itineraries visiting more than 270 of the very best ports. From New England forests and New Zealand fjords to Mexican villages and Mediterranean villas...from crystal blue Alaskan glaciers to turquoise blue Caribbean seas, Princess brings you the world as no one else can.

### Australia & New Zealand

Explore the cosmopolitan cities and charming towns of Australia and New Zealand on this cruise **Down Under**. Sailing between Sydney and Auckland, enjoy numerous activities and sights along the way, such as snorkelling with creatures of the Great Barrier Reef or taking in the spectacular views at Fjordland National Park.

### Christchurch

Take a leisurely stroll around Cathedral Square and tour the 19th century British-inspired cathedral.

### Fjordland National Park (Scenic Cruising)

Sail this World Heritage site and home of 14 majestic fjords and five icy-blue lakes.

### Melbourne, Australia

The commercial heart of Australia is also home to the world-class Royal Botanical Gardens.

### Sydney, Australia

This "capital of the Pacific Rim" offers spectacular sights like the famous Opera House

### Australia & New Zealand Cruises: Sydney to Auckland

Embarkation Port: Sydney, Australia

Embarkation Date(s):

2008: Dec 12

2009: Jan 5, Jan 29

### Auckland to Sydney

Ship: **Diamond Princess**

Embarkation Port: Auckland, New Zealand

Embarkation Date(s):

2008: Dec 24

2009: Jan 17, Feb 10



# New Zealand



Skyline of Auckland



**CAPITAL CITY:** Wellington

**LANGUAGE:** English, Maori

**CURRENCY:** New Zealand dollar

**VISA:** Required by SA passport holders

**AREA:** 270,990 km<sup>2</sup>

**TIME DIFFERENCE:** SA time + 10 hours

**HEALTH REQUIREMENTS:** No vaccinations are presently required

## Auckland, North Island

The biggest and liveliest city in New Zealand manages to retain a laid back feel and a sense of space that is all too often lacking in large cities. The city's main selling point is its beautiful countryside, picturesque beaches and unspoilt islands. You can spend a day outdoors trekking through the forests or lounging on the beach and then spend the evening at the theatre or dining in a top-notch restaurant.

### Discover Auckland

Enjoy a trip over the Harbour Bridge and through the American Express Viaduct harbour. Visit the famous Auckland landmark of Mount Eden, a dormant volcano whose summit offers excellent panoramic views of the city and harbours. The sightseeing tour also takes in the Auckland Domain, the city's oldest park, which is situated on a 62,000-year-old volcano.

In addition to these natural features the city sights tour also takes in the trendy shopping area of Parnell Village with its historical buildings that have been transformed into boutiques, antique, craft and specialty shops.

Your tour will then take you along the scenic waterfront route of Tamaki Drive, before returning to Downtown.

*from NZ\$68 pp*

★★★

### Kingsgate Parnell

**LOCATION:** Overlooking the famous Parnell Rose Gardens, 10 minute drive from the city centre and nearest beach.

**ACCOMMODATION:** 107 rooms with satellite television, radio, minibar, hairdryer, automatic wake up call.

**FACILITIES:** Restaurant, bar, 24 hour room service, outdoor pool, babysitting and laundry facilities.

*from NZ\$68 - 79 pp*

★★★

### Mercure

**LOCATION:** In the heart of the business and shopping district.

**ACCOMMODATION:** 177 medium size rooms with internet via TV, laptop connection, air-conditioning, satellite TV, in-house movie, radio, minibar, hairdryer and automatic wake up call.

**FACILITIES:** Gym, business centre, baby sitting, disabled and laundry facilities.

*from NZ\$82 - 99 pp*

★★★

### Copthorne Harbour City

**LOCATION:** Opposite the waterfront harbour area of the city.

**ACCOMMODATION:** Medium size rooms with mini bar, TV with cable channels, iron and ironing board, and hair dryer.

**FACILITIES:** Restaurant overlooking the harbour, bar, 24 hour room service & portage, 12 floors, sauna, baby sitting, laundry facilities and business centre.

*from NZ\$89 - 131 pp*



### WHAT THINGS COST

These prices are an average price and may vary according to areas, hotels and season.

Glass of Wine:	NZ\$ 6-9
Beer:	NZ\$ 6-7
Tea/Coffee:	NZ\$ 3.50-4
Soft drinks:	NZ\$ 1.50
Water Small bottle:	NZ\$ 2
Local Meal (lunch):	NZ\$ 10-15



# Christchurch, South Island



A Sunny Autumn day in Christchurch

Located on the east coast of the South Island, Christchurch is known internationally as 'The Garden City' due to its well established expansive parks and public gardens.

Visitors are spoilt for choice and residents have a superb outdoor lifestyle at their doorsteps. There is something different to see and do within one or two hours drive in any direction of Christchurch.

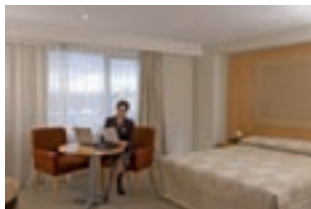


★★★

## Holiday Inn On Avon

**LOCATION:** Alongside the banks of the River Avon.  
**ACCOMMODATION:** 131 rooms with TV, radio, mini bar, hairdryer, connection for laptop, internet via television and TV.  
**FACILITIES:** 24 hour room service, pool, gym, shop, baby sitting, laundry facilities and disabled facilities.

from NZ\$72 - 103 pp



★★★★

## Copthorne Durham Street

**LOCATION:** Across the road from the Convention centre.  
**ACCOMMODATION:** 161 rooms with modern facilities like tea/coffee makers, ironing facility, mini-bar, in-house movies.  
**FACILITIES:** 24 hour room service and portage, gym, sauna, baby sitting, laundry facilities, business centre and disabled facilities.

from NZ\$79 - 123 pp



Trolley, Christchurch

## SIGHTSEEING

### Swimming with the Dolphins

Opportunity to swim with dolphins in the sheltered waters of Akaroa Harbour. Includes: wetsuit, masks, snorkels. Hot shower and drink, Free dolphin information brochure, certificate and dolphin postcard.

from NZ\$ 140 pp

### Morning Sightseeing Tour

Highlights include Cathedral Square, Town Hall, Museum, Botanical Gardens & Arts Centre. On leaving inner city visit several parks including Mona Vale & Hagley Park before continuing on to the Sign of the Takahe.

from NZ\$ 57 pp



# Wellington, North Island



Wellington Harbour

Wellington has the sophistication of an international metropolis combined with the charm of a local village.

Organised around its splendid harbour, with areas of natural beauty located a short drive

away, Wellington, the Capital City of New Zealand has attractions that make the most of its abundant natural virtues. It is a beautiful city packed with fine restaurants and attractions and a lively cultural scene.



★★★

## Ibis Wellington

**LOCATION:** 500m from the railway station in the Central business district.  
**ACCOMMODATION:** 200 large Ibis brand rooms with air-conditioning, TV, iron, ironing board and hairdryers.  
**FACILITIES:** Restaurant, small lobby, laundry and disabled facilities and a business centre.

from NZ\$73 - 76 pp



★★★★

## Intercontinental

**LOCATION:** In the centre of the business district one block back from the Waterfront.  
**ACCOMMODATION:** 203 modern rooms, including bathrobes, high floors enjoy excellent views.  
**FACILITIES:** Restaurant, 24 hour room service, heated pool, gym, beauty parlour.

from NZ\$119 - 155 pp

## SIGHTSEEING

### Highlights of Wellington

Half day tour including Parliament buildings, Old St Paul's church, Mt Victoria and a trip on the cable car. Also visit the national museum, Te Papa where you experience the mix of Maori and European history.

from NZ\$142 pp

### Kapiti Gold Coast Tour

Half day tour exploring the coast north of Wellington. Visit Plimmerton, Paraparaumu. Stops made at; Chocolate NZ Factory, Lindale Farm, Southward Vintage Car Museum, Paekakariki Hill summit. Departs 9.00am and 1.30pm (except Christmas Day):

from NZ\$91 pp



Wellington Cable Car